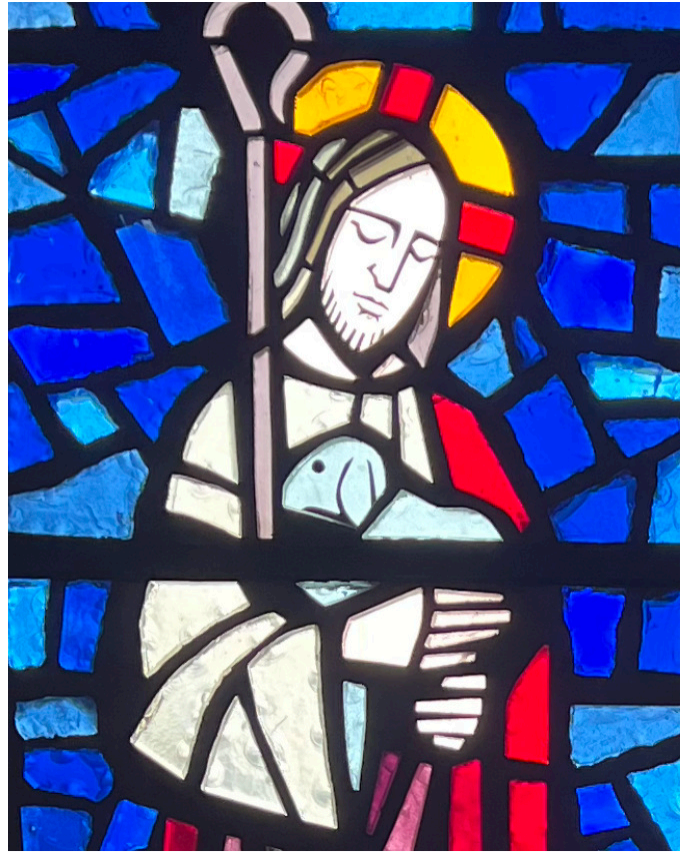




Parish Profile 2024

Our prayer for a new Rector

O God, who has blessed and sustained us through the years: we ask that you continue to lead us, stretch us, and direct us in our search for a new rector. Raise for us, we pray, a priest and pastor who will boldly proclaim your Gospel, faithfully administer your sacraments, and serve your people with love and compassion, that we may continue to grow in the likeness of Christ and be a beacon of love and hope to our community and the world. To the glory of your Holy Name. Amen.





Who we are, who we seek

At our core, the Episcopal Church of the Redeemer is an affirming, inclusive, and loving community of faithful people committed to serving Christ and making Him known. We welcome all people, as unique creations of God, to fully participate at all levels in our common life and worship.

With more than 350 active members and an average Sunday attendance of more than 100 worshippers, our vibrant and multi-generational parish is diverse, active, and eager to serve. Through multiple ministries, programs, and events, we believe that serving one another and the wider community is an essential way to express God's love in action.

We also yearn to do more. While a stable church with mature programs, a balanced budget, and high levels of parishioner satisfaction, the top three priorities from our recent parish-wide survey highlight our desire to connect

with more people, attract more families, and help those in our community in need. The Spirit is in motion around us, beckoning us to be in motion also.

And so we look for a new rector who will:

Inspire and connect people to God's Word.

Guide us in shaping our vision and lead us toward its realization.

Engage people empathetically and care for them in times of need.

Help us fulfill our commitment to being the church God has called us to be.

Top 3 priorities

based on parish-wide survey

- Develop and implement a comprehensive strategy to reach new people and incorporate them into the life of the church.
- Make necessary changes to attract families with children and youth to our church.
- Develop ministries that work toward healing those broken by life circumstances.



In our own words

“Try it; you might like it! Harmonious. All ages. Inclusive. Variety. Comfortable size. Guided by scripture, tradition, and reason our mission is to share the Creator’s Love with all, respecting the uniqueness of each one. Come and see!”

“I love Redeemer because we are open and loving. It has been our church family for over 40 years.”

“I am a cradle Episcopalian and Redeemer has become a warm and comfortable home for me. I look forward to time spent worshipping and doing God’s work with fellow Redeemerites in the presence.”

“Church of the Redeemer has been my church home for a long time. Redeemer’s family is resilient, caring, fun, and recognizes that we are not all at the same spot in our faith journeys...and that is fine. We honor the importance of the liturgy and tradition in the worship



The first time I entered this church, I felt **joy and peace**. The community was fantastic and welcoming. I finally found **home**.

service, it is okay to have some levity coming from the sanctuary, and our music consists of traditional as well as much loved praise music. I guess you could say we are a more laid back traditional Episcopal church community.”

welcome or noticed. I knew from the moment I walked in to Redeemer that I had found my church home! So welcoming!”

“Have we got a deal for you! Come, come as you are. Just come!”

“I was Catholic. I visited all the area churches and never felt



How we worship

As members of the Episcopal Diocese of West Missouri and the Worldwide Anglican Communion, we are united through liturgies and sacraments as presented in the Book of Common Prayer.

We conduct two Holy Eucharist Rite II services each Sunday at 8 am and 10:30 am, with the later service including music. We encourage active involvement from lay members, including as lectors, acolytes, Eucharistic visitors, and altar guild volunteers. We also warmly embrace occasional guest preachers, both within the parish and beyond it, who offer their talents and unique perspectives to our communal worship.

Regular services are supplemented with various events throughout the year, including Stations of the Cross, Evening Prayer, Blessing of the Animals, and other offices and services. Intercessory prayer is available during Communion at

the 10:30 am service along with Healing Prayers with Laying on of Hands and Holy Unction every second Sunday.

Adult formation programs are scheduled between these two services, with children's formation starting with our 10:30 am service.

Our 20-person choir of parish volunteers, along with a new organ installed in 2022, fills our sanctuary with traditional songs from the Hymnal aligning with the liturgical calendar as well as modern praise songs from our Redeemer Songbook. Occasional instruments and other voices join the choir periodically, including an open-to-all Fifth Sunday "Standing Room Only" chorus.

We also stream our services and various formation events thanks to the talents and generosity of our parishioners.



Our history

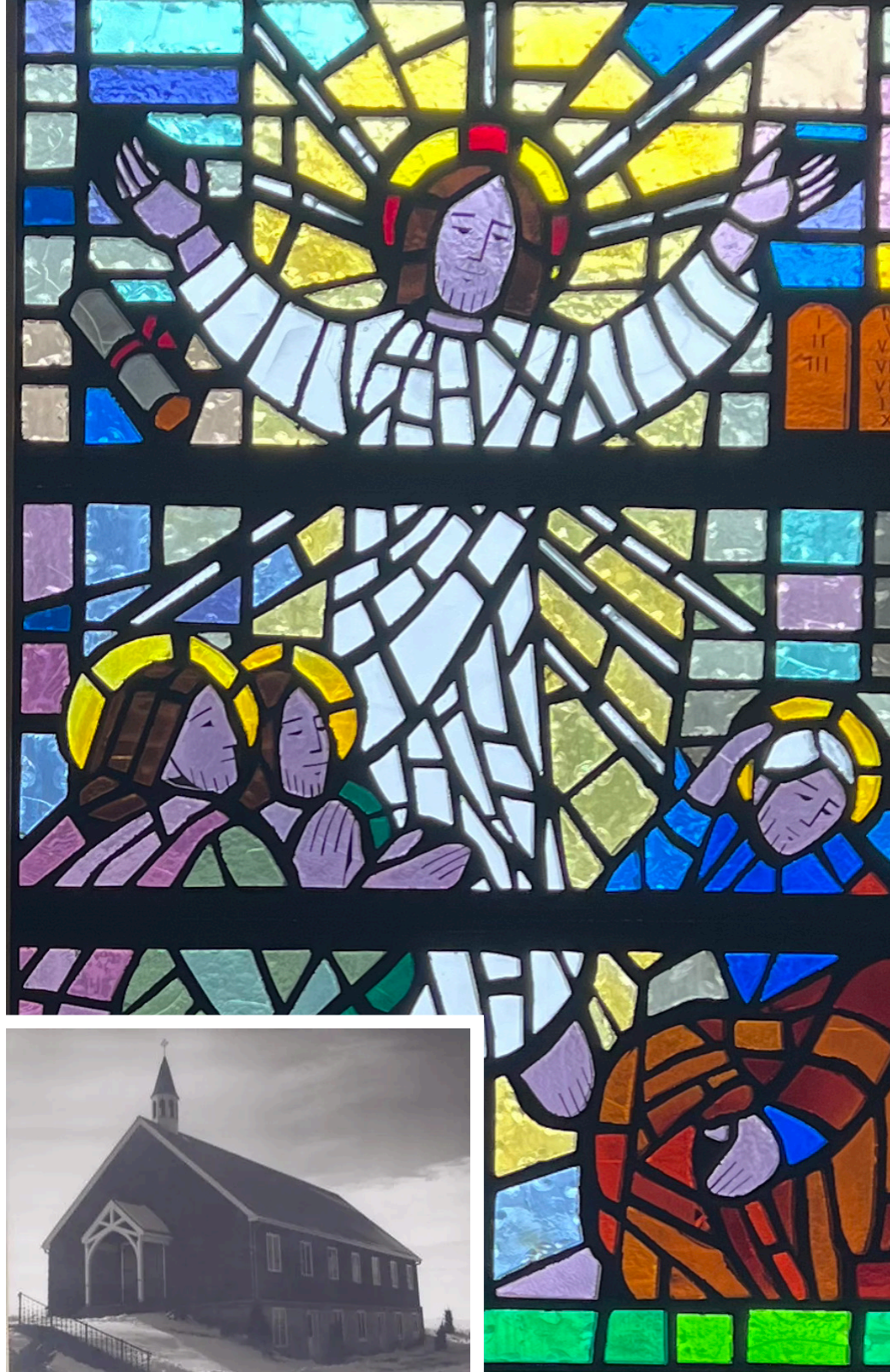
The Church of the Redeemer was established from the dedication of a handful of founders who devoted themselves to see its ministry increase.

Wilber Cochel gifted to the Episcopal Church a tract of farmland just east of what is now the Tiffany Springs exit of I-29 in the northern Kansas City metro. There, the National Town and Country Church Institute founded Roanridge, a training center for priests and seminarians to study the issues of life in small-town America as well as the trades of organic farming and tractor repair. As Roanridge grew into its own seminary-like community by the mid 1950s, the Chapel of the Redeemer was started as a mission of the Diocese of West Missouri.

In 1958, Redeemer relocated to a growing area near Platte Woods, moving to its current location. "The little gray church with the red doors" was built and the first services held in November 1960.

Throughout the 1960s, Redeemer's financial hardships nearly meant the end of its ministry. Thanks to the work of Dean Coffelt and others, the ministry of Redeemer continued, even without paid clergy. The church grew from 5 to 152 members by 1967. Redeemer was granted full parish status in 1982, no longer being served by vicars as a mission.

In 1987, the church was greatly expanded, building our current narthex, nave, sanctuary, and educational facilities. The old church, turned into a gathering area across the narthex from the new sanctuary, was named Coffelt Hall in appreciation for Dean Coffelt's faithfulness to God's work in and through Redeemer.



In 2003, the nave was expanded and office spaces added into what constitutes our present buildings and grounds configuration. The House of Prayer, originally a vicarage, now serves primarily as host to the Northland Infant Clothing Center. Whereas the early days of the church had scarce resources and limited

clergy, the Church has been blessed by many clergy in recent years, having not only a Rector but often serving as a home to new clerics (curates) assisting, which stands as a testament to Redeemer's history as a training ground for clergy development.

Ministry highlights

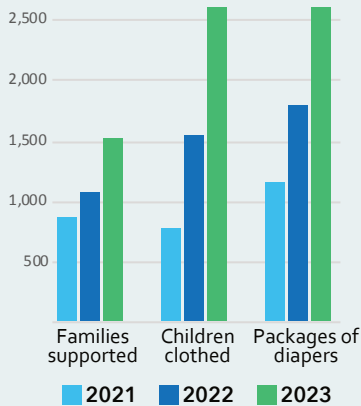
An active and engaged parish, we seek faith-filled growth, fellowship, and service to each other and to those in need as we dedicate our talents and energies to God's glory.

Northland Infant Clothing Center

From the former parish vicarage on the church grounds, the Northland Infant Clothing Center (NICC) supports families in our community by providing clothing and other necessities for their young children.

Since 2004, members of our congregation have participated in clothing drives, fundraising events, and have volunteered their time to ensure that the NICC can continue its mission of helping families in the Northland community.

The NICC offers free new and gently used clothing for sizes newborn to 5T as well as underclothing, socks, shoes, coats, diapers and wipes, blankets, books, and other infant personal care items.



- Altar Guild
- Cursillo
- Episcopal Church Women
- Eucharistic Visitors
- Finance
- Good Redeemer Youth Group
- Hospitality Committee
- Lay Readers and Eucharistic Ministers
- Memorial Garden
- Men's Bible Study
- Music Ministry
- Northland Infant Clothing Center
- Outreach
- Prayer Life
- Ramp Angels
- Redeemer Connections
- Soil Mates
- Southern Platte Emergency Assistance Center
- Sunday School
- Table Talk Dinner Group
- Ushers and Greeters
- Vacation Bible School
- Vestry
- Welcome Committee
- Women's Bible Study

Plus adult formation, fundraisers, potlucks, special services, and other opportunities for fellowship throughout the year.

Redeemer Connections

Redeemer Connections, a new ministry started last year, seeks to develop and deepen relationships that parish members have with each other and with the church's mission, with the underlying premise that more meaningful connections built on trust, love, and compassion result in a more dynamic and fulfilling parish life.

During three sessions in 2023, Redeemer Connections became an incubator for engagement, change, and innovation. Specific impacts, among others, include a palpable increase in energy and enthusiasm as well as new ideas that enhanced our support of NICC and Vacation Bible School. Four sessions are planned this year.

Southern Platte Emergency Assistance Center

Redeemer has played a pivotal role in supporting the Southern Platte Emergency Assistance Center (SPEAC), an ecumenical food pantry sponsored by five local churches. SPEAC's mission is to help alleviate hunger in Southern Platte County.

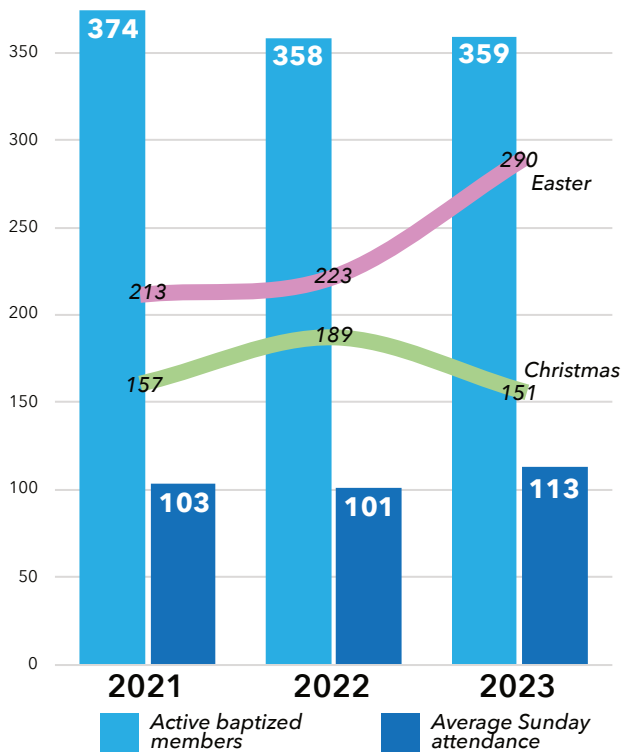
Whether through monthly food drives, volunteering at the center, or contributing financially, Redeemer church members support the center as it provides food aid and essential services to those facing hardship.

2023

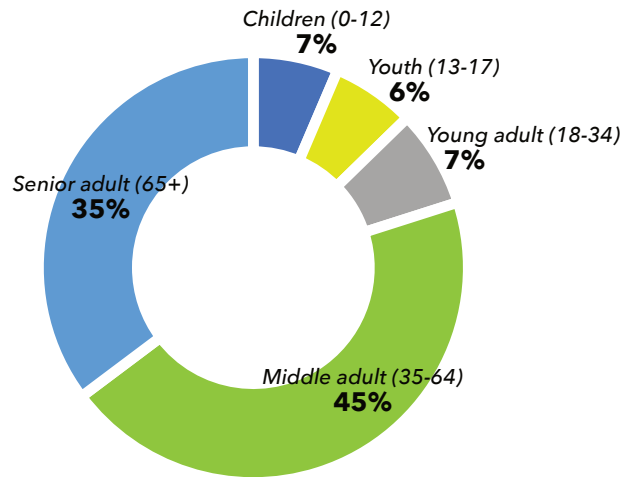
5,650 Individuals supported
36,047 Bags of groceries provided



Membership and attendance



Parish demographics

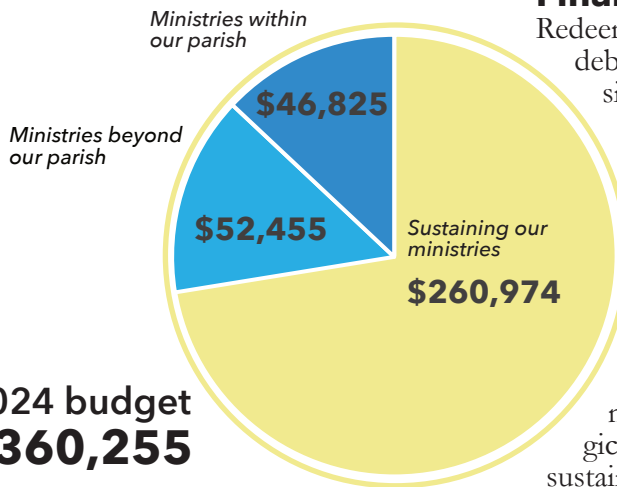


Financial outlook

Redeemer is blessed by many generous parishioners, no debt, and a balanced budget in order to sustain the mission of the church and contribute to its multiple ministries.

For 2024, budgeted contributions (including pledges from 73 pledging units, plate offerings, investments, building use, and miscellaneous income) total \$360,255.

Budgeted expenses are divided between ministries beyond our parish (diocesan commitments and community ministries), ministries within our parish (liturgical, formation, and congregational ministries), and sustaining our ministries (physical presence, safety and safekeeping, clergy compensation, and administration).



2024 budget
\$360,255





Kansas City metropolitan area

Carlos Moreno/kcur.org

Kansas City, far from “fly-over country,” is a world-class cultural, shopping, entertainment, sports, business, and innovation destination. The metropolitan area spans nine counties in Missouri and five in Kansas—yet the region broadly shares the same sense of community and spirit.

Where jazz and BBQ converge

Kansas City is known for its cen-

tral role in the flourishing of jazz and Kansas City-style barbecue in the 1920s. Based on those rich traditions, today more than 40 area nightclubs feature jazz and more than 100 restaurants offer the best barbecue in the country.

City of Fountains

Since the late 19th century, fountains have been a fixture of Kansas City life. Today, more than 200

fountains dot the area, second only to Rome, Italy.

One-of-a-kind cultural venues

- Kauffman Center for the Performing Arts
- National World War I Museum and Memorial
- Harry S. Truman Presidential Library
- Nelson-Atkins Museum of Art
- Negro Leagues Baseball Museum
- American Jazz Museum
- Kemper Museum of Contemporary Art

First-class attractions and entertainment

- Union Station
- Starlight Theatre
- Kansas City Zoo
- Science City
- Hallmark Kaleidoscope
- T-Mobile Center
- Worlds of Fun/Oceans of Fun



National World War I Museum and Memorial / kcparks.org



Champion sports teams and iconic settings

- Kansas City Chiefs (NFL)
- Kansas City Royals (MLB)
- Sporting KC (MLS)
- KC Current (NWSL), along with the first (and only) stadium dedicated to professional women’s soccer
- Kansas Speedway (NASCAR)

Exceptional shopping districts

- Kansas City Power and Light
- Crossroads Art District
- Crown Center
- Country Club Plaza
- Legends
- Zona Rosa Town Center
- Westport
- River and City Market

Top-rated universities

- University of Kansas (and Medical Center)
- University of Missouri Kansas City
- Park University
- University of Central Missouri

Modern infrastructure

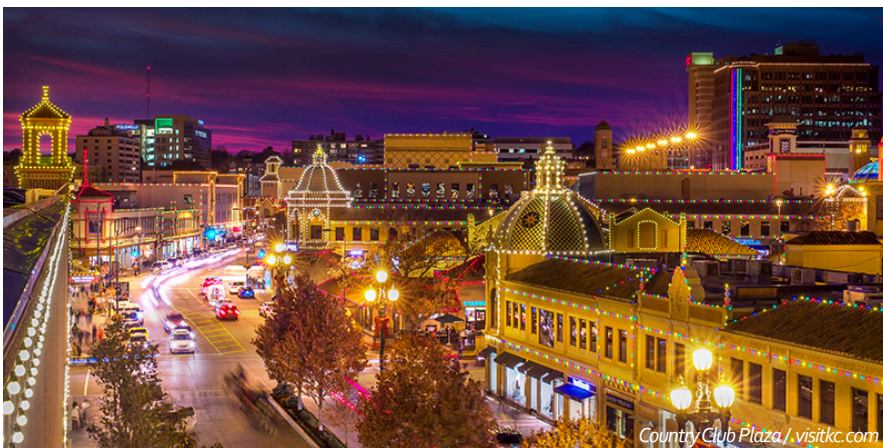
- Kansas City International Airport (2023)
- Downtown streetcar trolley (2016)
- #1 freeway miles per capita in the U.S.
- #1 rail by tonnage in the U.S.
- First U.S. city to receive Google fiber
- More Foreign Trade Zone space than any other U.S. city.

Innovative employers

Several iconic businesses are headquartered in the Kansas City metro area, including Hallmark Cards, H&R Block, AMC Theatres, Russell Stover, Garmin International, Cerner Corporation (now Oracle Cerner), and T-Mobile (second headquarters). Other large companies with a significant presence include Amazon, Ford, Honeywell, UPS, and FedEx.

Kansas City is regarded as the heart of the “Silicon Prairie.” With several financial technology startups and other small business innovators, Kansas City was designated as one of the 31 regional innovation and technology hubs by the U.S. Department of Commerce in 2023 and one of five U.S. Department of Defense innovation hubs in 2024.

The federal government is the largest employer in the region, including the Federal Reserve Bank of Kansas City, Kansas City National Security Campus, FEMA Region 7 headquarters, FBI Kansas City Field Office, Whiteman Air Force Base, and the U.S. Army Combined Arms Center at Fort Leavenworth.



Our neighborhood

Located in a small residential neighborhood in Platte County in an area of Kansas City known as the Northland (north of the Missouri River), Redeemer draws members from across the region. More rural than most of the metro, the rolling, forested hills of Platte County are marked by numerous hiking and bike trails, lakes, parks, award-winning downtowns and school districts, and a rich history stretching back to Lewis and Clark. At the same time, Platte County offers its own distinctive shopping and dining experiences along with easy access to the rest of Kansas City and the Kansas City International Airport.

Nearby historic Parkville and Weston, routinely regarded as among the best small towns in Missouri, highlight the local culture and spirit, with one-of-a-kind restaurants, entrepreneurial businesses, and popular festivals that draw thousands of visitors each year. Zona Rosa, just north of Re-



deemer, is a unique open-air shopping district with restaurants, concert space, and a winter ice rink. Snow Creek, one of two ski slopes in Missouri, has 13 ski trails and a large tube park. A bit farther south, North Kansas City and Riverside, both just across the river from downtown, are thriving, close-knit communities centrally located to all that the Kansas City metropolitan area offers.





Our invitation

If you feel called to lead the Episcopal Church of the Redeemer, please email your cover letter, resume, and Office of Transition Ministry portfolio to:

The Rev. Chas Marks, Missioner for Transitions of the Diocese of West Missouri, at transition@diowestmo.org.

To correspond with our Search Committee, please email redemerkc@gmail.com.

Please visit our [website](#) (including the “Why Redeemer?” video) to learn more about our parish.

On behalf of our congregation,

The Search Committee

Anthony Garcia, *co-chair*
Todd Puntney, *co-chair*
Diane Boyum
Lorraine Forrest
Glenn Green
Gregg Hejna

Karen Kissinger
Lisa Lee
Stephen Ripley
Steve Smith
Phil Stump
Bruce Williams

Strengths

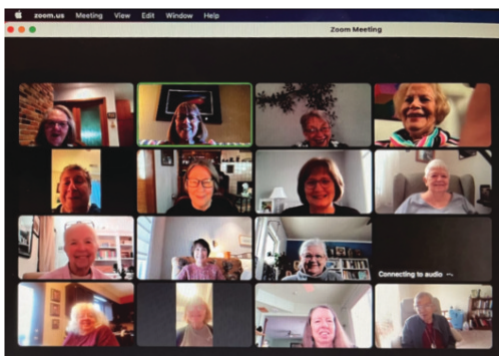
Redeemer is —

- Welcoming to all and encouraging of each other.
- Inclusive and diverse.
- Active, committed, generous, and inspired by God’s presence.
- A church family, young at heart and willing to adapt to wherever we are called.

Opportunities

We are —

- Ready to do more (especially toward healing those broken by life’s circumstances).
- Eager for growth (especially to attract new members and families with children).
- Motivated to deepen our connections with each other and with the community.







www.redeemerkc.org

7110 N. State Route 9
Kansas City, MO 64152

(816) 741-1136

[redeemerkc@gmail.com](mailto:redemerkc@gmail.com)